

**ANNEX I**

**SUMMARY OF PRODUCT CHARACTERISTICS**

▼ This medicinal product is subject to additional monitoring. This will allow quick identification of new safety information. Healthcare professionals are asked to report any suspected adverse reactions. See section 4.8 for how to report adverse reactions.

## **1. NAME OF THE MEDICINAL PRODUCT**

Trodely 200 mg powder for concentrate for solution for infusion.

## **2. QUALITATIVE AND QUANTITATIVE COMPOSITION**

One vial of powder contains 200 mg sacituzumab govitecan.

After reconstitution, one mL of solution contains 10 mg sacituzumab govitecan.

Sacituzumab govitecan is a Trop-2-directed antibody-drug conjugate (ADC). Sacituzumab is a humanised monoclonal antibody (hRS7 IgG1κ) that recognises Trop-2. The small molecule, SN-38, is a topoisomerase I inhibitor, which is covalently attached to the antibody by a hydrolysable linker. Approximately 7-8 molecules of SN-38 are attached to each antibody molecule.

For the full list of excipients, see section 6.1.

## **3. PHARMACEUTICAL FORM**

Powder for concentrate for solution for infusion

Off-white to yellowish powder.

## **4. CLINICAL PARTICULARS**

### **4.1 Therapeutic indications**

Trodely as monotherapy is indicated for the treatment of adult patients with unresectable or metastatic triple-negative breast cancer (mTNBC) who have received two or more prior systemic therapies, including at least one of them for advanced disease (see section 5.1).

### **4.2 Posology and method of administration**

Trodely must only be prescribed and administered to patients by healthcare professionals experienced in the use of anti-cancer therapies and administered in an environment where full resuscitation facilities are available.

#### Posology

The recommended dose of sacituzumab govitecan is 10 mg/kg body weight administered as an intravenous infusion once weekly on Day 1 and Day 8 of 21-day treatment cycles. Treatment should be continued until disease progression or unacceptable toxicity.

#### Prevention treatment

Prior to each dose of sacituzumab govitecan, treatment for prevention of infusion-related reactions and prevention of chemotherapy-induced nausea and vomiting (CINV) is recommended (see section 4.4).

### Dose modifications for infusion-related reactions

The infusion rate of sacituzumab govitecan should be slowed down or infusion interrupted if the patient develops an infusion-related reaction. Sacituzumab govitecan should be permanently discontinued if life-threatening infusion-related reactions occur (see section 4.4).

### Dose modifications for adverse reactions

Dose modifications to manage adverse reactions of sacituzumab govitecan are described in Table 1. The sacituzumab govitecan dose should not be re-escalated after a dose reduction for adverse reactions has been made.

**Table 1: Recommended dose modifications for adverse reactions**

Adverse reaction	Occurrence	Dose modification
<b>Severe neutropenia</b>		
Grade 4 neutropenia $\geq 7$ days, OR Grade 3 febrile neutropenia (absolute neutrophil count $< 1000/\text{mm}^3$ and fever $\geq 38.5^\circ\text{C}$ ), OR At time of scheduled treatment, Grade 3-4 neutropenia which delays dosing by 2 or 3 weeks for recovery to $\leq$ Grade 1	First	Administer granulocyte-colony stimulating factor (G-CSF)
	Second	25% dose reduction
	Third	50% dose reduction
	Fourth	Discontinue treatment
At time of scheduled treatment, Grade 3-4 neutropenia which delays dosing beyond 3 weeks for recovery to $\leq$ Grade 1	First	Discontinue treatment
<b>Severe non-neutropenic toxicity</b>		
Grade 4 non-hematologic toxicity of any duration, OR Any Grade 3-4 nausea, vomiting or diarrhoea due to treatment that is not controlled with antiemetics and anti-diarrhoeal agents, OR Other Grade 3-4 non-hematologic toxicity persisting $> 48$ hours despite optimal medical management, OR At time of scheduled treatment, Grade 3-4 non-neutropenic hematologic or non-hematologic toxicity, which delays dose by 2 or 3 weeks for recovery to $\leq$ Grade 1	First	25% dose reduction
	Second	50% dose reduction
	Third	Discontinue treatment
In the event of Grade 3-4 non-neutropenic hematologic or non-hematologic toxicity, Grade 3 nausea or Grade 3-4 vomiting, which does not recover to $\leq$ Grade 1 within 3 weeks	First	Discontinue treatment

### Special populations

#### *Elderly*

No dose adjustment is required in patients  $\geq 65$  years old. Data from sacituzumab govitecan in patients  $\geq 75$  years are limited.

#### *Hepatic impairment*

No adjustment to the starting dose is required when administering sacituzumab govitecan to patients with mild hepatic impairment (bilirubin  $\leq 1.5$  upper limit of normal [ULN] and aspartate aminotransferase [AST]/alanine aminotransferase [ALT]  $< 3$  ULN).

The safety of sacituzumab govitecan in patients with moderate or severe hepatic impairment has not been established. Sacituzumab govitecan has not been studied in patients with serum bilirubin

> 1.5 ULN, or AST or ALT > 3 ULN in patients without liver metastases, or AST or ALT > 5 ULN, in patients with liver metastases. The use of sacituzumab govitecan should be avoided in these patients.

#### *Renal impairment*

No adjustment to the starting dose is required when administering sacituzumab govitecan to patients with mild renal impairment.

Sacituzumab govitecan has not been studied in patients with moderate renal impairment, severe renal impairment or end-stage renal disease (Creatinine Clearance [CrCl]  $\leq$  15 mL/min).

#### *Paediatric population*

The safety and efficacy of sacituzumab govitecan in children aged 0 to 18 years have not been established. No data are available.

#### Method of administration

Sacituzumab govitecan is for intravenous use only. It must be administered as an intravenous infusion, not as an intravenous push or bolus.

First infusion: the infusion should be administered over a period of 3 hours.

Subsequent infusions: the infusion should be administered over a period of 1 to 2 hours if prior infusions were tolerated.

Patients have to be observed during each infusion and for at least 30 minutes after each infusion for signs or symptoms of infusion-related reactions (see section 4.4).

For instructions on reconstitution of the medicinal product before administration, see section 6.6.

### **4.3 Contraindications**

Hypersensitivity to the active substance or to any of the excipients listed in section 6.1.

### **4.4 Special warnings and precautions for use**

#### Traceability

In order to improve the traceability of biological medicinal products, the name and the batch number of the administered product should be clearly recorded.

#### Neutropenia

Sacituzumab govitecan can cause severe or life-threatening neutropenia (see section 4.8). Sacituzumab govitecan should not be administered if the absolute neutrophil count is below 1500/mm<sup>3</sup> on Day 1 of any cycle or if the neutrophil count is below 1000/mm<sup>3</sup> on Day 8 of any cycle. Therefore, it is recommended that patients' blood counts are monitored as clinically indicated during treatment. Sacituzumab govitecan should not be administered in case of neutropenic fever. Treatment with granulocyte-colony stimulating factor and dose modifications may be required due to severe neutropenia (see sections 4.2 and 4.8).

#### Diarrhoea

Sacituzumab govitecan can cause severe diarrhoea (see section 4.8). Sacituzumab govitecan should not be administered in case of Grade 3-4 diarrhoea at the time of scheduled treatment and treatment should only be continued when resolved to  $\leq$  Grade 1 (see section 4.2 and 4.8). At the onset of diarrhoea, and if no infectious cause can be identified, treatment with loperamide should be initiated. Additional supportive measures (e.g. fluid and electrolyte substitution) may also be employed as clinically indicated.

Patients who exhibit an excessive cholinergic response to treatment with sacituzumab govitecan (e.g. abdominal cramping, diarrhoea, salivation, etc.) can receive appropriate treatment (e.g. atropine) for subsequent treatments with sacituzumab govitecan.

### Hypersensitivity

Sacituzumab govitecan can cause severe and life-threatening hypersensitivity (see section 4.8). Anaphylactic reactions have been observed in clinical trials with sacituzumab govitecan and the use of sacituzumab govitecan is contraindicated in patients with a known hypersensitivity to sacituzumab govitecan (see section 4.3).

Pre-infusion treatment, including antipyretics, H1 and H2 blockers, or corticosteroids (e.g. 50 mg hydrocortisone or equivalent, orally or intravenously), for patients receiving sacituzumab govitecan is recommended. Patients should be closely observed for infusion-related reactions during each sacituzumab govitecan infusion and for at least 30 minutes after completion of each infusion. The infusion rate of sacituzumab govitecan should be slowed down or infusion interrupted if the patient develops an infusion-related reaction. Sacituzumab govitecan should be permanently discontinued if life-threatening infusion-related reactions occur (see section 4.2).

### Nausea and vomiting

Sacituzumab govitecan is emetogenic (see section 4.8). Antiemetic preventive treatment with two or three medicinal products (e.g. dexamethasone with either a 5-hydroxytryptamine 3 [5-HT<sub>3</sub>] receptor antagonist or a Neurokinin-1 [NK-1] receptor antagonist as well as other medicinal products as indicated) is recommended for prevention of chemotherapy-induced nausea and vomiting (CINV).

Sacituzumab govitecan should not be administered in case of Grade 3 nausea or Grade 3-4 vomiting at the time of scheduled treatment administration and treatment should only be continued with additional supportive measures when resolved to  $\leq$  Grade 1 (see section 4.2). Additional antiemetics and other supportive measures may also be employed as clinically indicated. All patients should be given take-home medicinal products with clear instructions for prevention and treatment of nausea and vomiting.

### Use in patients with reduced UGT1A1 activity

SN-38 (the small molecule moiety of sacituzumab govitecan) is metabolised via uridine diphosphate-glucuronosyl transferase (UGT1A1). Genetic variants of the UGT1A1 gene such as the UGT1A1\*28 allele lead to reduced UGT1A1 enzyme activity. Individuals who are homozygous for UGT1A1\*28 allele are potentially at increased risk for neutropenia, febrile neutropenia, and anaemia and may be at increased risk for other adverse reactions following initiation of sacituzumab govitecan treatment (see section 4.8). Approximately 20% of the Black population, 10% of the White population, and 2% of the East Asian population are homozygous for the UGT1A1\*28 allele. Decreased function alleles other than UGT1A1\*28 may be present in certain populations. Patients with known reduced UGT1A1 activity should be closely monitored for adverse reactions. When unknown, no testing of UGT1A1 status is required as the management of adverse reactions including the recommended dose modifications will be the same for all patients.

### Embryo-foetal toxicity

Based on its mechanism of action, sacituzumab govitecan can cause teratogenicity and/or embryo-foetal lethality when administered to a pregnant woman. Sacituzumab govitecan contains a genotoxic component, SN-38, and targets rapidly dividing cells. Pregnant women and women of childbearing potential should be informed of the potential risk to the foetus. The pregnancy status of females of reproductive potential should be verified prior to the initiation of sacituzumab govitecan (see section 4.6).

## Sodium

This medicinal product will be further prepared for administration with sodium-containing solution (see section 6.6) and this should be considered in relation to the total sodium intake to the patient from all sources per day.

### **4.5 Interaction with other medicinal products and other forms of interaction**

No interaction studies have been performed. Inhibitors or inducers of UGT1A1 are expected to increase or decrease SN-38 exposure, respectively.

#### UGT1A1 inhibitors

Concomitant administration of sacituzumab govitecan with inhibitors of UGT1A1 may increase the incidence of adverse reactions due to potential increase in systemic exposure to SN-38. Sacituzumab govitecan should be used with caution in patients receiving UGT1A1 inhibitors (e.g. propofol, ketoconazole, EGFR tyrosine kinase inhibitors).

#### UGT1A1 inducers

Exposure to SN-38 may be substantially reduced in patients concomitantly receiving UGT1A1 enzyme inducers. Sacituzumab govitecan should be used with caution in patients receiving UGT1A1 inducers (e.g. carbamazepine, phenytoin, rifampicin, ritonavir, tipranavir).

### **4.6 Fertility, pregnancy and lactation**

#### Women of childbearing potential/Contraception in males and females

Women of childbearing potential have to use effective contraception during treatment and for 6 months after the last dose.

Male patients with female partners of childbearing potential have to use effective contraception during treatment with sacituzumab govitecan and for 3 months after the last dose.

#### Pregnancy

There are no available data on the use of sacituzumab govitecan in pregnant women. However, based on its mechanism of action, sacituzumab govitecan can cause teratogenicity and/or embryo-foetal lethality when administered during pregnancy. Sacituzumab govitecan contains a genotoxic component, SN-38, and targets rapidly dividing cells.

Sacituzumab govitecan should not be used during pregnancy unless the clinical condition of the woman requires treatment with sacituzumab govitecan.

The pregnancy status of women of childbearing potential should be verified prior to the initiation of sacituzumab govitecan.

Women who become pregnant must immediately contact their doctor.

#### Breast-feeding

It is unknown whether sacituzumab govitecan or its metabolites are excreted in human milk. A risk to breastfed newborns/infants cannot be excluded. Breast-feeding should be discontinued during treatment with sacituzumab govitecan and for 1 month after the last dose.

## Fertility

Based on findings in animals, sacituzumab govitecan may impair fertility in females of reproductive potential (see section 5.3). No human data on the effect of sacituzumab govitecan on fertility are available.

## **4.7 Effects on ability to drive and use machines**

Sacituzumab govitecan has minor influence on the ability to drive and use machines, e.g. dizziness, fatigue (see section 4.8).

## **4.8 Undesirable effects**

### Summary of the safety profile

The most frequently reported adverse reactions reported in patients treated with sacituzumab govitecan were: diarrhoea (64.5%), nausea (64.2%), neutropenia (64.2%), fatigue (52.5%), alopecia (44.3%), anaemia (43.2%), vomiting (38.0%), constipation (36.3%), decreased appetite (28.1%), cough (22.7%), and abdominal pain (20.8%).

The most frequently reported serious adverse reactions reported in patients treated with sacituzumab govitecan were febrile neutropenia (4.5%) and diarrhoea (3.6%).

The most common grade 3 or higher adverse reactions were neutropenia (49.5%), leukopenia (12.0%), diarrhoea (10.7%), anaemia (10.1%), febrile neutropenia (6.6%), fatigue (5.2%), hypophosphataemia (5.2%), nausea (4.1%) and vomiting (3.0%).

### Tabulated list of adverse reactions

The safety profile for sacituzumab govitecan is derived from pooled data from two clinical studies involving 366 patients who received sacituzumab govitecan 10 mg/kg body weight for the treatment of TNBC. The median exposure to sacituzumab govitecan in this data set was 4.9 months.

Table 2 presents adverse reactions reported with sacituzumab govitecan. The adverse reaction frequencies are based on all-cause adverse event frequencies, where a proportion of the events for an adverse reaction may have other causes than sacituzumab govitecan, such as the disease, other medicinal products or unrelated causes. The severity of adverse drug reactions was assessed based on the Common Terminology Criteria for Adverse Events (CTCAE), defining grade 1 = mild, grade 2 = moderate, grade 3 = severe, grade 4 = life threatening, and 5 = death.

Adverse reactions are listed by System Organ Class and frequency category. Frequency categories are defined as: very common ( $\geq 1/10$ ); common ( $\geq 1/100$  to  $< 1/10$ ); uncommon ( $\geq 1/1,000$  to  $< 1/100$ ); rare ( $\geq 1/10,000$  to  $< 1/1,000$ ); very rare ( $< 1/10,000$ ); and not known (cannot be estimated from the available data). Within each frequency grouping, adverse reactions are presented in decreasing order of all severity grade frequencies.

**Table 2: List of adverse reactions**

MedDRA System organ class	All severity grades Frequency	All severity grades (%) n=366	Severity grade $\geq 3$ (%) n=366
<b>Infections and infestations</b>			
Urinary tract infection	Very common	15.3	1.1
Upper respiratory tract infection	Very common	13.1	0.3
Nasopharyngitis	Common	5.2	0.0

MedDRA System organ class	All severity grades Frequency	All severity grades (%) n=366	Severity grade ≥3 (%) n=366
Sinusitis	Common	4.4	0.0
Bronchitis	Common	3.8	0.3
Influenza	Common	2.5	0.5
Oral herpes	Common	2.5	0.0
<b>Blood and lymphatic system disorders</b>			
Neutropenia	Very common	64.2	49.5
Anaemia	Very common	43.2	10.1
Leukopenia	Very common	19.4	12.0
Lymphopenia	Very common	10.9	2.5
Febrile neutropenia	Common	6.6	6.6
<b>Immune system disorders</b>			
Hypersensitivity <sup>1</sup>	Very common	36.6	1.9
<b>Metabolism and nutrition disorders</b>			
Decreased appetite	Very common	28.1	1.4
Hypokalaemia	Very common	16.7	2.5
Hypomagnesaemia	Very common	15.0	0.3
Hyperglycaemia	Very common	11.7	1.6
Hypophosphataemia	Common	8.7	5.2
Hypocalcaemia	Common	7.1	0.8
<b>Psychiatric disorders</b>			
Insomnia	Very common	11.7	0.0
Anxiety	Common	6.3	0.3
<b>Nervous system disorders</b>			
Headache	Very common	19.4	0.8
Dizziness	Very common	13.7	0.0
Dysgeusia	Common	9.0	0.0
<b>Respiratory, thoracic and mediastinal disorders</b>			
Cough	Very common	22.7	0.0
Rhinorrhoea	Common	6.6	0.0
Nasal congestion	Common	6.0	0.0
Epistaxis	Common	5.2	0.0
Dyspnoea exertional	Common	4.1	0.0
Productive cough	Common	3.8	0.0
Upper airway cough syndrome	Common	2.7	0.0
<b>Gastrointestinal disorders</b>			
Diarrhoea	Very common	64.5	10.7
Nausea	Very common	64.2	4.1
Vomiting	Very common	38.0	3.0
Constipation	Very common	36.3	0.5
Abdominal pain	Very common	20.8	2.2
Stomatitis	Common	9.6	0.8
Abdominal pain upper	Common	6.8	0.3
Gastroesophageal reflux disease	Common	5.7	0.0
Abdominal distension	Common	5.5	0.0
<b>Skin and subcutaneous tissue disorders</b>			
Alopecia	Very common	44.3	0.0
Rash	Very common	15.8	1.1
Pruritus	Very common	12.0	0.0
Dry Skin	Common	9.0	0.0
Rash maculopapular	Common	6.8	0.0



MedDRA System organ class	All severity grades Frequency	All severity grades (%) n=366	Severity grade ≥3 (%) n=366
<b>Musculoskeletal and connective tissue disorders</b>			
Back pain	Very common	18.3	0.8
Arthralgia	Very common	13.7	0.3
Musculoskeletal chest pain	Common	6.3	0.0
Muscle spasms	Common	5.2	0.0
<b>Renal and urinary disorders</b>			
Dysuria	Common	4.4	0.3
Haematuria	Common	2.7	0.3
<b>General disorders and administration site conditions</b>			
Fatigue	Very common	52.5	5.2
Pain	Common	7.1	0.8
Chills	Common	5.5	0.0
<b>Investigations</b>			
Weight decreased	Very common	10.1	0.0
Blood alkaline phosphatase increased	Common	8.5	1.4
Activated partial thromboplastin time prolonged	Common	4.1	0.5

1: Hypersensitivity events reported up to the end of the day after treatment was administered. Includes events coded to the following preferred terms: dyspnoea; hypotension; flushing; erythema; chest discomfort; wheezing; oedema; urticaria; anaphylactic reaction; mouth ulceration; skin exfoliation; swollen tongue; throat tightness.

### Description of selected adverse reactions

#### *Neutropenia*

The median time to onset of neutropenia following the start of the first treatment cycle was 15 days. The median duration of neutropenia was 8 days.

Neutropenia occurred in 64.2% (235/366) of patients treated with sacituzumab govitecan, including Grade 3-4 neutropenia in 49.5% of patients. Neutropenia was the reason for dose reduction in 6.3% (23/366) of patients.

Febrile neutropenia occurred in 6.6% (24/366) of patients treated with sacituzumab govitecan. Febrile neutropenia was the reason for dose reduction in 1.9% (7/366) of patients.

#### *Use in patients with reduced UGT1A1 activity*

The incidence of Grade 3-4 neutropenia was 57% (40/70) in patients homozygous for the UGT1A1\*28 allele, 47% (115/246) in patients heterozygous for the UGT1A1\*28 allele, and 45% (117/261) in patients homozygous for the wild-type allele. The incidence of Grade 3-4 febrile neutropenia was 19% (13/70) in patients homozygous for the UGT1A1\*28 allele, 4% (10/246) in patients heterozygous for the UGT1A1\*28 allele, and 4% (10/261) in patients homozygous for the wild-type allele. The incidence of Grade 3-4 anaemia was 24% (17/70) in patients homozygous for the UGT1A1\*28 allele, 8% (20/246) in patients heterozygous for the UGT1A1\*28 allele, and 10% (26/261) in patients homozygous for the wild-type allele.

#### *Diarrhoea*

The median time to onset of diarrhoea following the start of the first treatment cycle was 13 days. The median duration of diarrhoea was 8 days.

Diarrhoea occurred in 64.5% (236/366) of patients treated with sacituzumab govitecan. Grade 3 events occurred in 10.7% (39/366) of patients. One of 366 patients (< 1%) discontinued treatment because of diarrhoea. Neutropenic colitis was observed in < 1% (1/366) of patients.

### *Hypersensitivity*

Hypersensitivity reactions reported up to the end of the day following dosing occurred in 36.6% (134/366) of patients treated with sacituzumab govitecan. Grade 3 and above hypersensitivity occurred in 1.9% (7/366) of patients treated with sacituzumab govitecan. The incidence of hypersensitivity reactions leading to permanent discontinuation of sacituzumab govitecan was 0.3% (1/366).

### *Immunogenicity*

Available data are limited. Thus, no conclusion can be drawn on the impact of treatment-emergent anti-drug antibodies (ADAs) on the efficacy and safety of sacituzumab govitecan.

### Reporting of suspected adverse reactions

Reporting suspected adverse reactions after authorisation of the medicinal product is important. It allows continued monitoring of the benefit/risk balance of the medicinal product. Healthcare professionals are asked to report any suspected adverse reactions via **the national reporting system listed in Appendix V**.

## **4.9 Overdose**

In clinical studies, doses of up to 18 mg/kg (approximately 1.8 times the maximum recommended dose of 10 mg/kg body weight) led to a higher incidence of severe neutropenia.

In case of overdose, patients should be closely monitored for signs or symptoms of adverse reactions, in particular severe neutropenia, and appropriate treatment instituted.

## **5. PHARMACOLOGICAL PROPERTIES**

### **5.1 Pharmacodynamic properties**

Pharmacotherapeutic group: antineoplastic agents, monoclonal antibodies and antibody drug conjugates, other monoclonal antibodies, ATC code: L01FX17.

### Mechanism of action

Sacituzumab govitecan binds to Trop-2-expressing cancer cells and is internalised with the subsequent release of SN-38 from a hydrolysable linker. SN-38 interacts with topoisomerase I and prevents re-ligation of topoisomerase I-induced single strand breaks. The resulting DNA damage leads to apoptosis and cell death.

### Clinical efficacy and safety

The efficacy and safety of sacituzumab govitecan was assessed in ASCENT (IMMU-132-05), an international Phase 3, multicentre, open-label, randomised study conducted in 529 patients with unresectable locally advanced or metastatic triple-negative breast cancer (mTNBC) who had relapsed after at least two prior chemotherapies (no upper limit) for breast cancer. Earlier adjuvant or neoadjuvant therapy for more limited disease qualified as one of the required prior regimens if the development of unresectable, locally advanced or metastatic disease occurred within a 12-month period of time after completion of chemotherapy. All patients received previous taxane treatment in either the adjuvant, neoadjuvant, or advanced stage unless they had a contraindication or were intolerant to taxanes. Poly-ADP ribose polymerase (PARP) inhibitors were allowed as one of the two prior chemotherapies for patients with a documented germline BRCA1/BRCA2 mutation.

Patients were randomised (1:1) to receive sacituzumab govitecan 10 mg/kg as an intravenous infusion on Day 1 and Day 8 of a 21-day treatment cycle or Treatment of Physician's Choice (TPC) which was dosed based on body surface area and per the approved product information. TPC was determined by the investigator before randomisation from one of the following single-agent regimens: eribulin

(n = 139), capecitabine (n = 33), gemcitabine (n = 38), or vinorelbine (except if patient had  $\geq$  Grade 2 neuropathy, n = 52). Patients with stable brain metastases (pre-treated, non-progressive, without anti-seizure medicinal products and on stable corticosteroid dose for at least 2 weeks) were eligible. Magnetic resonance imaging (MRI) to determine brain metastases was required only for patients with known or suspected brain metastases. Patients with known Gilbert's disease, bone-only disease, known history of unstable angina, myocardial infarction, or congestive heart failure, active chronic inflammatory bowel disease or gastrointestinal (GI) perforation, human immunodeficiency virus (HIV), active hepatitis B or C infection, live vaccine within 30 days, or who have previously received irinotecan were excluded.

Patients were treated until disease progression or unacceptable toxicity. The primary efficacy endpoint was progression-free survival (PFS) in patients without brain metastases at baseline (i.e. BMNeg) as measured by a blinded, independent, centralised review (BICR) group of radiology experts using Response Evaluation Criteria in Solid Tumours (RECIST) v1.1 criteria. Secondary efficacy endpoints included PFS by BICR for the overall population, including all patients with and without brain metastases, overall survival (OS), objective response rate (ORR) and duration of response (DOR).

The primary analysis included 235 BMNeg patients in the sacituzumab govitecan group and 233 BMNeg patients in the TPC group. The analysis of the overall population included 267 patients in the sacituzumab govitecan group and 262 patients in the TPC group.

The demographics and baseline characteristics of the overall population (n = 529) were: median age of 54 years (range: 27–82 years) and 81% < 65 years; 99.6% female; 79% White; 12% Black; median number of prior systemic therapies was 4; 69% had previously received 2 to 3 prior chemotherapies; 31% had previously received > 3 prior chemotherapies; 42% had hepatic metastases; 12% had present or a history of brain metastases. 8% were BRCA1/BRCA2 mutational status positive; BRCA status was available for 339 patients. At study entry, all patients had an ECOG performance status of 0 (43%) or 1 (57%). The median time from diagnosis of Stage 4 to study entry was 16.2 months (range: -0.4 to 202.9 months). The most frequent prior chemotherapies were cyclophosphamide (83%), anthracycline (83%) including doxorubicin (53%), paclitaxel (78%), carboplatin (65%), capecitabine (67%), gemcitabine (36%), docetaxel (35%), and eribulin (33%). Overall, 29% of patients had received prior PD-1/PD-L1 therapy. Thirteen percent of patients in the sacituzumab govitecan group in the overall population received only 1 prior line of systemic therapy in the metastatic setting.

The efficacy results in the BMNeg population showed a statistical significant improvement of sacituzumab govitecan over TPC in PFS and OS with hazard ratios (HR) of 0.41 (n=468; 95% CI: 0.32, 0.52; p-value: <0.0001) and 0.48 (n=468; 95% CI: 0.38, 0.59; p-value: <0.0001), respectively. The median PFS was 5.6 months vs 1.7 months; the median OS was 12.1 months vs 6.7 months, in patients treated with sacituzumab govitecan and TPC, respectively.

The efficacy results in the overall population were consistent with the BMNeg population in the pre-specified final analysis (11 March 2020 cut-off date) and are summarised in Table 3.

**Table 3: Efficacy endpoints (overall population) - Pre-specified Final Analysis**

	Pre-specified Final Analysis (11 March 2020 cut-off date)	
	Sacituzumab govitecan n=267	Treatment of physician's choice (TPC) n=262
Progression-free survival <sup>1</sup>		
Number of events (%)	190 (71.2)	171 (65.3)
Median PFS in months (95% CI)	4.8 (4.1,5.8)	1.7 (1.5, 2.5)
Hazard ratio (95% CI)	0.43 (0.35, 0.54)	
p-value <sup>2</sup>	<0.0001	
Overall Survival		
Number of deaths (%)	179 (67.0)	206 (78.6)
Median OS in months (95% CI)	11.8 (10.5, 13.8)	6.9 (5.9, 7.7)
Hazard ratio (95% CI)	0.51 (0.41, 0.62)	
p-value <sup>2</sup>	<0.0001	
Overall response rate (ORR)		
Number of responders (%)	83 (31)	11 (4)
Odds ratio (95% CI)	10.99 (5.66, 21.36)	
p-value <sup>3</sup>	<0.0001	
Complete response, n (%)	10 (4)	2 (1)
Partial response, n (%)	73 (27)	9 (3)
Duration of response (DOR)		
Median DOR in months (95% CI)	6.3 (5.5, 9.0)	3.6 (2.8, NE)

1 PFS is defined as the time from the date of randomization to the date of the first radiological disease progression or death due to any cause, whichever comes first.

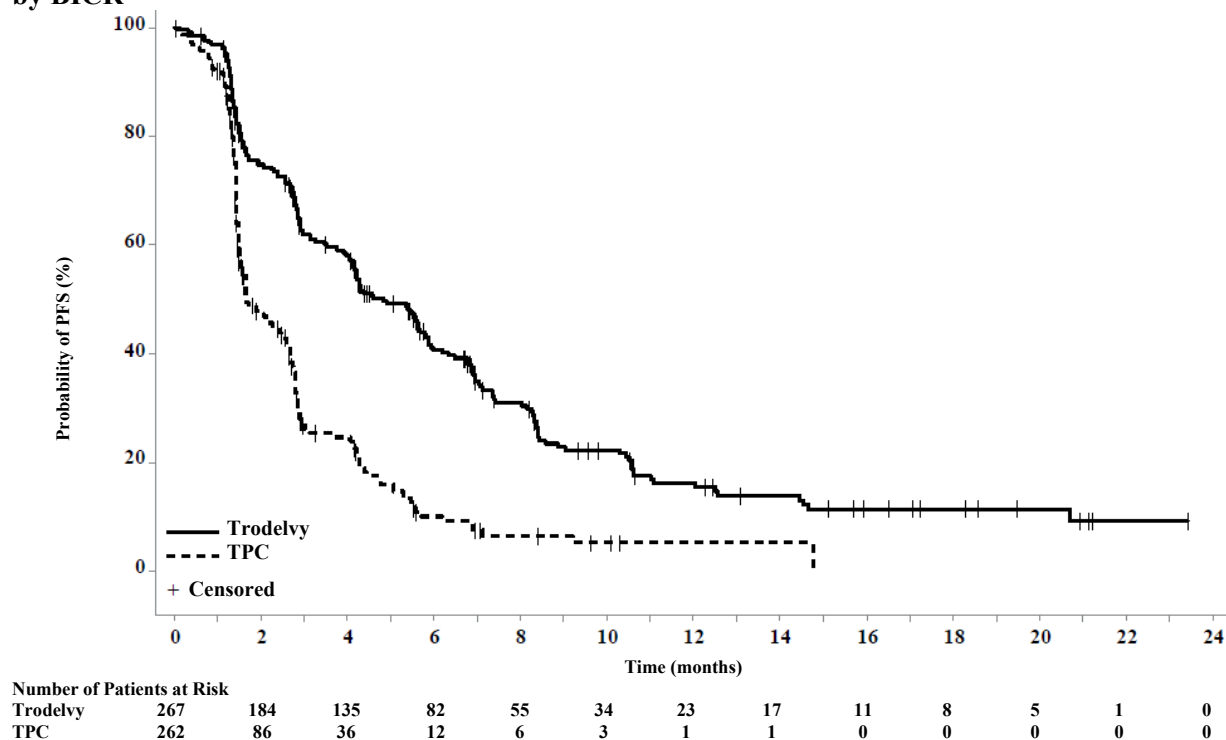
2 Stratified log-rank test adjusted for stratification factors: number of prior chemotherapies, presence of known brain metastases at study entry, and region.

3 Based on Cochran-Mantel-Haenszel test.

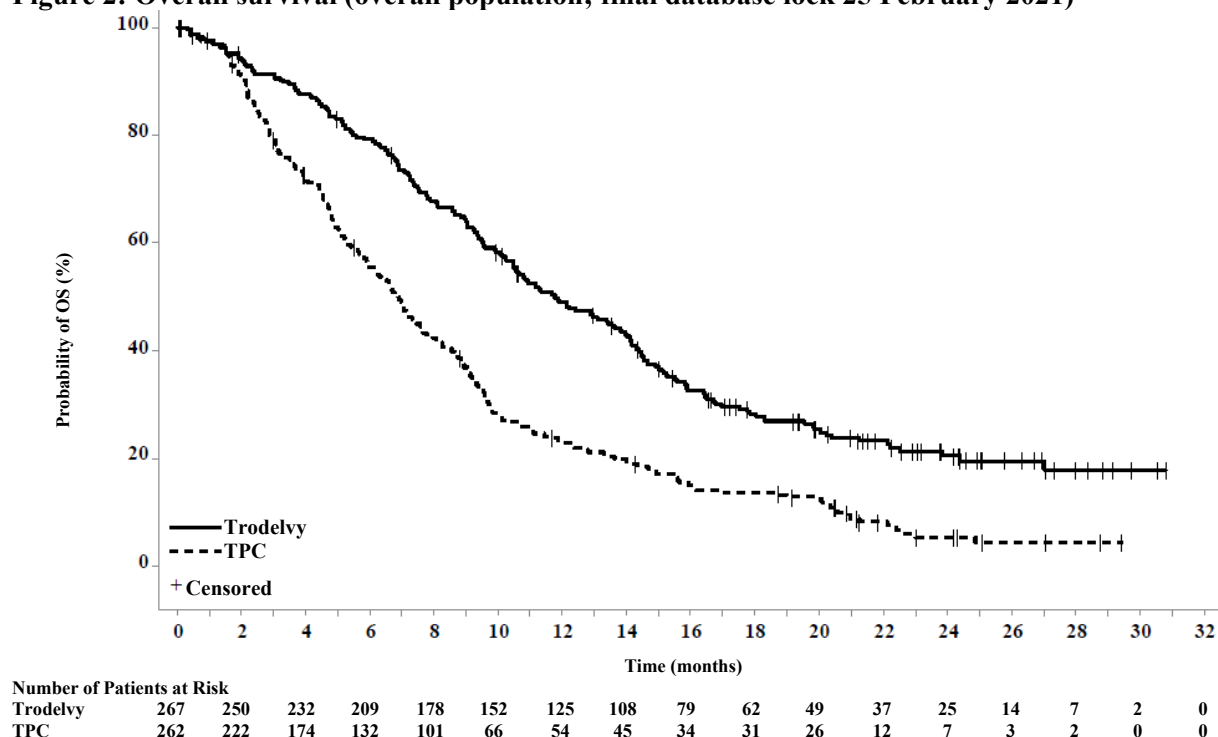
CI = Confidence Interval

In an updated efficacy analysis (final database lock 25 February 2021), results were consistent with the pre-specified final analysis. The median PFS by BICR was 4.8 months vs 1.7 months, in patients treated with sacituzumab govitecan and TPC, respectively (HR of 0.41; 95% CI: 0.33, 0.52). The median OS was 11.8 months vs 6.9 months, respectively (HR of 0.51; 95% CI: 0.42, 0.63). Kaplan-Meier curves for updated PFS by BICR and OS are presented in Figures 1 and 2.

**Figure 1: Progression free survival (overall population; final database lock 25 February 2021) by BICR**



**Figure 2: Overall survival (overall population; final database lock 25 February 2021)**



### *Sub-group analysis*

In subgroup analyses, improvements in PFS and OS in patients treated with sacituzumab govitecan compared to TPC were consistent across patient subgroups irrespective of age, race, BRCA status, prior number of systemic therapies overall (2 and >2, 2-3 and >3) and in the metastatic setting (1 and >1), prior therapy with anthracycline or PDL1, and liver metastases.

### *Brain metastases*

An exploratory analysis of PFS and OS in patients with previously treated, stable brain metastases showed a stratified HR of 0.65 (n=61; 95% CI: 0.35, 1.22) and 0.87 (n=61; 95% CI: 0.47, 1.63), respectively. The median PFS was 2.8 months vs 1.6 months; the median OS was 6.8 months vs 7.5 months, in patients treated with sacituzumab govitecan and TPC, respectively.

### *Trop-2 expression*

Additional subgroup analyses were conducted to evaluate the efficacy by tumour Trop-2 expression levels and the results were consistent across the different scoring methods used. In patients with low Trop-2 levels using membrane H-score by quartiles, benefit of sacituzumab govitecan over TPC was shown for both PFS (HR 0.64; 95% CI: 0.37, 1.11) and OS (HR of 0.71; 95% CI: 0.42, 1.21).

### Paediatric population

The European Medicines Agency has waived the obligation to submit the results of studies with sacituzumab govitecan in all subsets of the paediatric population for the treatment of breast cancer (see section 4.2 for information on paediatric use).

## **5.2 Pharmacokinetic properties**

The serum pharmacokinetics of sacituzumab govitecan and SN-38 were evaluated in study IMMU-132-05 in a population of mTNBC patients who received sacituzumab govitecan as a single agent at a dose of 10 mg/kg body weight. The pharmacokinetic parameters of sacituzumab govitecan and free SN-38 are presented in Table 4.

**Table 4: Summary of mean PK parameters (CV%) of sacituzumab govitecan and free SN-38**

	<b>Sacituzumab govitecan</b>	<b>Free SN-38</b>
$C_{max}$ [ng/mL]	240 000 (22.2%)	90.6 (65.0%)
AUC <sub>0-168</sub> [ng*h/mL]	5 340 000 (23.7%)	2 730 (41.1%)

$C_{max}$ : maximum plasma concentration

AUC<sub>0-168</sub>: area under plasma concentration curve through 168 hours

### Distribution

Based on population pharmacokinetic analyses, the central volume distribution of sacituzumab govitecan was 2.96 L.

### Elimination

The mean half-life of sacituzumab govitecan and free SN-38 was 15.3 and 19.7 hours, respectively. Based on population pharmacokinetic analyses, the clearance of sacituzumab govitecan is 0.14 L/h.

### Metabolism

No metabolism studies with sacituzumab govitecan have been conducted. SN-38 (the small molecule moiety of sacituzumab govitecan) is metabolised via UGT1A1.

### Special populations

Pharmacokinetic analyses in patients treated with sacituzumab govitecan (n = 527) did not identify an effect of age, race, or mild renal impairment on the pharmacokinetics of sacituzumab govitecan.

### *Renal impairment*

Renal elimination is known to contribute minimally to the excretion of SN-38, the small molecule moiety of sacituzumab govitecan. There are no data on the pharmacokinetics of sacituzumab govitecan

in patients with moderate renal impairment, severe renal impairment or end-stage renal disease (CrCl  $\leq$  15 mL/min).

#### *Hepatic Impairment*

The exposure of sacituzumab govitecan is similar in patients with mild hepatic impairment (bilirubin  $\leq$  ULN and AST  $>$  ULN, or bilirubin  $>$  1.0 to  $<$  1.5 ULN and AST of any level; n = 59) to patients with normal hepatic function (bilirubin or AST  $<$  ULN; n = 191).

Sacituzumab govitecan exposure is unknown in patients with moderate or severe hepatic impairment. SN-38 exposure may be elevated in such patients due to decreased hepatic UGT1A1 activity.

### **5.3 Preclinical safety data**

SN-38 was clastogenic in an *in vitro* mammalian cell micronucleus test in Chinese hamster ovary cells and was not mutagenic in an *in vitro* bacterial reverse mutation (Ames) assay.

In a repeat-dose toxicity study in cynomolgus monkeys, intravenous administration of sacituzumab govitecan resulted in endometrial atrophy, uterine hemorrhage, increased follicular atresia of the ovary, and atrophy of vaginal epithelial cells at doses  $\geq$  60 mg/kg (1.9 times the human recommended dose of 10 mg/kg based on body weight allometric scaling).

Non-clinical data for the novel excipient MES reveal no special hazard for humans based on conventional repeated dose toxicity and genotoxicity studies.

## **6. PHARMACEUTICAL PARTICULARS**

### **6.1 List of excipients**

2-(*N*-morpholino)ethane sulfonic acid (MES)  
Polysorbate 80 (E433)  
Trehalose dihydrate

### **6.2 Incompatibilities**

This medicinal product must not be mixed with other medicinal products except those mentioned in section 6.6.

### **6.3 Shelf life**

#### Unopened vial

3 years.

#### After reconstitution

The reconstituted solution should be used immediately to prepare the diluted solution for infusion. If not used immediately, the infusion bag containing diluted solution can be stored in a refrigerator (2°C to 8°C) for up to 24 hours protected from light.

### **6.4 Special precautions for storage**

Store in a refrigerator (2°C - 8°C).

Do not freeze.

Keep the vial in the outer carton in order to protect from light.

For storage conditions after reconstitution and dilution of the medicinal product, see section 6.3.

## 6.5 Nature and contents of container

Type I colourless, clear glass 50 mL vial, with an elastomeric butyl stopper and sealed with an aluminum flip-off overseal containing 200 mg of sacituzumab govitecan.

Each pack contains one vial.

## 6.6 Special precautions for disposal and other handling

Trodelvy is a cytotoxic medicinal product. Applicable special handling and disposal procedures have to be followed.

### Reconstitution

- Calculate the required dose (mg) of Trodelvy based on the patient's body weight at the beginning of each treatment cycle (or more frequently if the patient's body weight changed by more than 10% since the previous administration).
- Allow the required number of vials to warm to room temperature (20°C to 25°C).
- Using a sterile syringe, slowly inject 20 mL of sodium chloride 9 mg/mL (0.9%) solution for injection into each vial. The resulting concentration will be 10 mg/mL.
- Gently swirl vials and allow to dissolve for up to 15 minutes. Do not shake. The product should be inspected visually for particulate matter and discoloration prior to administration. The solution should be free of visible particulates, clear and yellow. Do not use the reconstituted solution if it is cloudy or discoloured.
- Use immediately to prepare a diluted solution for infusion.

### Dilution

- Calculate the required volume of the reconstituted solution needed to obtain the appropriate dose according to the patient's body weight.
- Determine the final volume of the infusion solution to deliver the appropriate dose at a sacituzumab govitecan concentration range of 1.1 mg/mL to 3.4 mg/mL.
- Withdraw and discard a volume of sodium chloride 9 mg/mL (0.9%) solution for injection from the final infusion bag that is equivalent to the required volume of the reconstituted solution.
- Withdraw the calculated amount of the reconstituted solution from the vial(s) using a syringe. Discard any unused portion remaining in the vial(s).
- To minimize foaming, slowly inject the required volume of reconstituted solution into a polyvinyl chloride, polypropylene or ethylene/propylene copolymer infusion bag. Do not shake the contents.
- If necessary, adjust the volume in the infusion bag as needed with sodium chloride 9 mg/mL (0.9%) solution for injection, to obtain a concentration of 1.1 mg/mL to 3.4 mg/mL (the total volume should not exceed 500 mL). Only sodium chloride 9 mg/mL (0.9%) solution for injection should be used since the stability of the reconstituted product has not been determined with other infusion-based solutions.
- For patients whose body weight exceeds 170 kg, divide the total dose of Trodelvy equally between two 500 mL infusion bags and infuse sequentially over 3 hours for the first infusion and over 1-2 hours for subsequent infusions.
- If not used immediately, the infusion bag containing diluted solution can be stored refrigerated 2°C to 8°C for up to 24 hours protected from light. Do not freeze. After refrigeration, administer the diluted solution at room temperature up to 25°C within 8 hours (including infusion time).



### Administration

- The infusion bag should be covered during administration to the subject until dosing is complete. It is not necessary to cover the infusion tubing or to use light-protective tubing during the infusion.
- Administer Trodelvy as an intravenous infusion. Protect the infusion bag from light.
- An infusion pump may be used.
- Do not mix Trodelvy, or administer as an infusion, with other medicinal products.
- Upon completion of the infusion, flush the intravenous line with 20 mL sodium chloride 9 mg/mL (0.9%) solution for injection.

### Disposal

Any unused medicinal product or waste material should be disposed of in accordance with local requirements.

## **7. MARKETING AUTHORISATION HOLDER**

Gilead Sciences Ireland UC  
Carrigtohill  
County Cork, T45 DP77  
Ireland

## **8. MARKETING AUTHORISATION NUMBER(S)**

EU/1/21/1592/001

## **9. DATE OF FIRST AUTHORISATION/RENEWAL OF THE AUTHORISATION**

Date of first authorisation: 22 November 2021

## **10. DATE OF REVISION OF THE TEXT**

Detailed information on this medicinal product is available on the website of the European Medicines Agency <http://www.ema.europa.eu>.

## **ANNEX II**

- A. MANUFACTURER OF THE BIOLOGICAL ACTIVE  
SUBSTANCE AND MANUFACTURER RESPONSIBLE FOR  
BATCH RELEASE**
- B. CONDITIONS OR RESTRICTIONS REGARDING SUPPLY  
AND USE**
- C. OTHER CONDITIONS AND REQUIREMENTS OF THE  
MARKETING AUTHORISATION**
- D. CONDITIONS OR RESTRICTIONS WITH REGARD TO THE  
SAFE AND EFFECTIVE USE OF THE MEDICINAL  
PRODUCT**

**A. MANUFACTURER OF THE BIOLOGICAL ACTIVE SUBSTANCE AND  
MANUFACTURER RESPONSIBLE FOR BATCH RELEASE**

Name and address of the manufacturer of the biological active substance

BSP Pharmaceuticals S.p.A.  
Via Appia km 65,561  
04013 Latina Scalo (LT)  
Italy

Name and address of the manufacturer responsible for batch release

Gilead Sciences Ireland UC  
IDA Business and Technology Park  
Carrigtohill  
Co. Cork, T45 DP77  
Ireland

**B. CONDITIONS OR RESTRICTIONS REGARDING SUPPLY AND USE**

Medicinal product subject to restricted medical prescription (see Annex I: Summary of Product Characteristics, section 4.2).

**C. OTHER CONDITIONS AND REQUIREMENTS OF THE MARKETING  
AUTHORISATION**

- **Periodic safety update reports (PSURs)**

The requirements for submission of PSURs for this medicinal product are set out in the list of Union reference dates (EURD list) provided for under Article 107c(7) of Directive 2001/83/EC and any subsequent updates published on the European medicines web-portal.

The marketing authorisation holder (MAH) shall submit the first PSUR for this product within 6 months following authorisation.

**D. CONDITIONS OR RESTRICTIONS WITH REGARD TO THE SAFE AND  
EFFECTIVE USE OF THE MEDICINAL PRODUCT**

- **Risk management plan (RMP)**

The MAH shall perform the required pharmacovigilance activities and interventions detailed in the agreed RMP presented in Module 1.8.2 of the marketing authorisation and any agreed subsequent updates of the RMP.

An updated RMP should be submitted:

- At the request of the European Medicines Agency;
- Whenever the risk management system is modified, especially as the result of new information being received that may lead to a significant change to the benefit/risk profile or as the result of an important (pharmacovigilance or risk minimisation) milestone being reached.

**ANNEX III**  
**LABELLING AND PACKAGE LEAFLET**

## **A. LABELLING**

**PARTICULARS TO APPEAR ON THE OUTER PACKAGING****CARTON****1. NAME OF THE MEDICINAL PRODUCT**

Trodelvy 200 mg powder for concentrate for solution for infusion  
sacituzumab govitecan

**2. STATEMENT OF ACTIVE SUBSTANCE(S)**

One vial of powder contains 200 mg sacituzumab govitecan. After reconstitution, one mL of solution contains 10 mg sacituzumab govitecan.

**3. LIST OF EXCIPIENTS**

Excipients: 2-(*N*-morpholino)ethane sulfonic acid (MES), polysorbate 80, trehalose dihydrate.

**4. PHARMACEUTICAL FORM AND CONTENTS**

Powder for concentrate for solution for infusion  
1 vial

**5. METHOD AND ROUTE(S) OF ADMINISTRATION**

Read the package leaflet before use.  
Intravenous use after reconstitution and dilution.

**6. SPECIAL WARNING THAT THE MEDICINAL PRODUCT MUST BE STORED OUT OF THE SIGHT AND REACH OF CHILDREN**

Keep out of the sight and reach of children.

**7. OTHER SPECIAL WARNING(S), IF NECESSARY**

Cytotoxic

**8. EXPIRY DATE**

EXP

**9. SPECIAL STORAGE CONDITIONS**

Store in a refrigerator.

Do not freeze.

Keep the vial in the outer carton in order to protect from light.

**10. SPECIAL PRECAUTIONS FOR DISPOSAL OF UNUSED MEDICINAL PRODUCTS OR WASTE MATERIALS DERIVED FROM SUCH MEDICINAL PRODUCTS, IF APPROPRIATE****11. NAME AND ADDRESS OF THE MARKETING AUTHORISATION HOLDER**

Gilead Sciences Ireland UC  
Carrigtohill  
County Cork, T45 DP77  
Ireland

**12. MARKETING AUTHORISATION NUMBER(S)**

EU/1/21/1592/001

**13. BATCH NUMBER**

Lot

**14. GENERAL CLASSIFICATION FOR SUPPLY****15. INSTRUCTIONS ON USE****16. INFORMATION IN BRAILLE**

Justification for not including Braille accepted.

**17. UNIQUE IDENTIFIER – 2D BARCODE**

2D barcode carrying the unique identifier included.

**18. UNIQUE IDENTIFIER – HUMAN READABLE DATA**

PC  
SN  
NN

<b>MINIMUM PARTICULARS TO APPEAR ON SMALL IMMEDIATE PACKAGING UNITS</b> <b>VIAL LABEL</b>
--

<b>1. NAME OF THE MEDICINAL PRODUCT AND ROUTE(S) OF ADMINISTRATION</b>
--

Trodelvy 200 mg powder for concentrate  
sacituzumab govitecan  
For IV use after reconstitution and dilution

<b>2. METHOD OF ADMINISTRATION</b>
------------------------------------

<b>3. EXPIRY DATE</b>
-----------------------

EXP

<b>4. BATCH NUMBER</b>
------------------------

Lot

<b>5. CONTENTS BY WEIGHT, BY VOLUME OR BY UNIT</b>
--

200 mg  
10 mg/mL after reconstitution

<b>6. OTHER</b>
-----------------

Cytotoxic



## **B. PACKAGE LEAFLET**

## Package leaflet: Information for the patient

### **Trodelvy 200 mg powder for concentrate for solution for infusion** sacituzumab govitecan

▼ This medicine is subject to additional monitoring. This will allow quick identification of new safety information. You can help by reporting any side effects you may get. See the end of section 4 for how to report side effects.

**Read all of this leaflet carefully before you are given this medicine because it contains important information for you.**

- Keep this leaflet. You may need to read it again.
- If you have any further questions, ask your doctor or nurse.
- If you get any side effects, talk to your doctor or nurse. This includes any possible side effects not listed in this leaflet. See section 4.

#### **What is in this leaflet**

1. What Trodelvy is and what it is used for
2. What you need to know before you are given Trodelvy
3. How you will be given Trodelvy
4. Possible side effects
5. How to store Trodelvy
6. Contents of the pack and other information

#### **1. What Trodelvy is and what it is used for**

Trodelvy is a cancer medicine that contains the active substance sacituzumab govitecan. One part of the medicine is a monoclonal antibody that attaches specifically to a protein on the surface of breast cancer cells called Trop-2. The other active part of Trodelvy is SN-38, a substance that can kill cancer cells. Once the medicine has attached to cancer cells, the SN-38 enters the cancer cells and kills them, thereby helping to fight your cancer.

**Trodelvy is used to treat a type of breast cancer in adults called triple-negative breast cancer.**

The medicine is used when it is not possible to remove the cancer with surgery, because the cancer has spread to areas outside the breast (locally advanced) or has spread to other sites in the body (metastasised). Trodelvy should only be used after patients have tried at least two other treatments for their cancer, including at least one of them for a locally advanced cancer or metastasised cancer.

Talk to your doctor or nurse if you have any questions about how Trodelvy works or why this medicine has been prescribed for you.

#### **2. What you need to know before you are given Trodelvy**

**You must not be given Trodelvy** if you are **allergic to sacituzumab govitecan** or any of the other **ingredients** of this medicine (listed in section 6). If you think you may be allergic, ask your doctor for advice.

## Warnings and precautions

### Infusion-related reactions

Trodelvy is given by drip into a vein. Some people may develop infusion-related reactions which can be severe or life-threatening. **Seek urgent medical attention** if you have any of the following signs and symptoms of **infusion-related reactions**:

- itching
- sudden outbreak of swollen, pale red bumps or plaques (wheals) on the skin
- fever
- sudden severe shivering accompanied by a feeling of coldness
- excessive sweating
- breathing difficulties and wheezing
- chest pain, heart palpitations

Your doctor may give you medicines before Trodelvy to help relieve the symptoms. During each infusion and for 30 minutes after, you will be closely monitored for these signs and symptoms of infusion-related reactions. Your doctor will slow down the infusion rate or stop it if you develop a serious infusion-related reaction.

### Neutropenia

This medicine can cause neutropenia, a condition where there are too few neutrophils in your blood, which increases the risk of infections. These infections can be severe and life-threatening. **Seek urgent medical attention** if you have the following signs and symptoms of **neutropenia or infections**:

- a fever (a temperature of 38.5°C or higher)
- chills or sweating
- sore throat, sores in the mouth, or a toothache
- stomach pain
- pain near the anus
- pain or burning when urinating, or urinating more often
- diarrhoea or sores around the anus
- a cough or shortness of breath

Your doctor will take blood samples to monitor the levels of neutrophils in your blood. You will not be given Trodelvy if the neutrophils are below a certain level on Day 1 or Day 8 of any treatment cycle.

Your doctor will adjust the amount of medicine you are given if you have severe neutropenia.

### Diarrhoea

**Seek urgent medical attention** if you suffer from **severe diarrhoea** whilst receiving Trodelvy.

Your Trodelvy treatment will be postponed until your diarrhoea has improved. You will be given loperamide to treat your diarrhoea, as long as you do not have an infection. If appropriate, you will also be given fluids.

Your doctor may also give you medicine, such as atropine, to help with stomach cramps, diarrhoea, and excessive saliva in mouth before your next treatment infusion.

### Nausea and vomiting

This medicine can cause nausea and vomiting. **Seek urgent medical attention** if you suffer from severe **nausea and vomiting** whilst receiving Trodelvy.

Your doctor will give you some medicines before your cancer therapy, and in between infusion sessions to help relieve nausea and vomiting. You will **not be given** Trodelvy if you **have severe nausea and vomiting**, and will only be given Trodelvy when the symptoms have been controlled.

### Patients who have the UGT1A1\*28 gene

Some patients are more likely to have certain side effects from the medicine due to their genetic make-up. If you have the UGT1A1\*28 gene, your body breaks the medicine down more slowly. This means you are more likely to develop certain side effects (such as neutropenia with or without fever and low level of red blood cells (anaemia)), than those who do not have the gene. These patients will be closely followed-up by their doctor.

#### **Talk to your doctor, or nurse before you are given Trodelvy if you:**

- have liver problems
- have kidney problems
- are a female of child-bearing age (see 'Pregnancy', 'Male and female Contraception' and 'Breast-feeding')
- are taking medicines to treat other conditions (see 'Other medicines and Trodelvy')
- have experienced any problems after receiving any infusions in the past.

While you are being given Trodelvy, your doctor will monitor you closely for side effects. If you get any serious side effects, your doctor may give you other medicines to treat these side effects, they may change how much Trodelvy you receive or may stop giving you Trodelvy altogether.

See section 4. for a list of all the possible side effects related to Trodelvy.

### **Children and adolescents**

Trodelvy should not be given to children and adolescents under 18 years old because there is no information on how it works in this age group.

### **Other medicines and Trodelvy**

Tell your doctor if you are taking, have recently taken or might take **any other medicines**.

Some medicines may affect the way Trodelvy works and may raise the level of Trodelvy's active substance in your blood, increasing the risk of side effects. They are:

- **propofol**, given as an anesthetic in surgery.
- **ketoconazole**, used to treat fungal infections.
- **tyrosine kinase inhibitors**, used to treat cancer (medicines ending in -nib).

Some medicines may lower the level of Trodelvy's active substance in your blood, decreasing its effects:

- **carbamazepine** or **phenytoin**, used to treat epilepsy.
- **rifampicin**, used to treat tuberculosis.
- **ritonavir** or **tipranavir**, used to treat HIV.

### **Pregnancy**

Trodelvy **should not be used** during pregnancy because it may harm the baby. Tell your doctor immediately if you are pregnant, think you may be pregnant, or are planning to have a baby.

### **Male and female contraception**

Women who might get pregnant must use effective contraception during treatment with Trodelvy, and for 6 months after the last dose of Trodelvy.

Men with female partners who could become pregnant must use effective contraception during treatment and for 3 months after the last dose of Trodelvy.

## Breast-feeding

**Do not breast-feed** during treatment with Trodelvy and for 1 month after the last dose. It is unknown whether this medicine passes into breast milk and could affect the baby.

## Driving and using machines

Trodelvy may affect your ability to drive and use machines e.g. feeling dizzy, fatigue. You should therefore be cautious when driving, using tools or operating machines after being given Trodelvy.

## 3. How you will be given Trodelvy

Trodelvy will only be given to you by your doctor or a nurse experienced in using anti-cancer therapies.

It is important that your doctor or nurse specialising in your care has confirmed you can take this medicine by carrying out a blood test prior to treatment.

### Medicines given before Trodelvy treatment

You will be given some medicines before receiving Trodelvy to help stop infusion-related reactions and any nausea and vomiting. Your doctor will decide what medicines you may need and how much to take.

### How much Trodelvy you will be given

Treatment for your cancer is repeated in 21-day (3-week) cycles. The recommended dose of Trodelvy is **10 mg for each kg of your body weight** at the start of each cycle (Day 1 of each cycle) and again one week later (Day 8 of each cycle).

### How you will be given your medicine

A doctor or nurse will give the medicine via an intravenous infusion (a drip into your vein).

**First infusion:** you will be given your first infusion of medicine over 3 hours.

**Second and subsequent infusions:** you will be given the other infusions over 1 to 2 hours if your first infusion was uneventful.

Your doctor or nurse will monitor you during and for 30 minutes after each infusion for signs and symptoms of infusion-related reactions.

### Infusion-related reactions

Your doctor will slow down the infusion rate of your medicine if you develop an infusion-related reaction. The medicine will be stopped if the infusion-related reaction is life-threatening. See section 2.

### Dose of medicine when experiencing some side-effects

Your doctor may change or stop your dose if you experience certain side effects. See section 4.

## If you are given more Trodelvy than you should

Since the infusion is given to you by your doctor or other appropriately trained staff, an overdose is unlikely. If you inadvertently receive too much medicine, your doctor will monitor you and give you additional treatment as required.

### **If a dose of Trodelvy is missed**

If you forget or miss your appointment, call your doctor or your treatment centre to make another appointment as soon as possible. Do not wait until your next planned visit. For the treatment to be fully effective, it is very important not to miss a dose.

### **If you stop treatment with Trodelvy**

You should not stop the therapy early without talking with your doctor first.

The therapy for breast cancer with Trodelvy usually requires a number of treatments. The number of infusions that you receive will depend on how you are responding to treatment. Therefore, you should continue receiving Trodelvy even if you see your symptoms improve and until your doctor decides that Trodelvy should be stopped. If the treatment is stopped too early, your symptoms may return.

If you have any further questions on the use of this medicine, ask your doctor or nurse.

## **4. Possible side effects**

Like all medicines, this medicine can cause side effects, although not everybody gets them.

### **Serious side effects**

**Seek urgent medical attention if you get any of the following very common serious side effects (may affect more than 1 in 10 people):**

- **Low white blood cell count (neutropenia)** which may cause the following signs and symptoms:
  - a fever, which is a body temperature of 38.5°C or higher: this is called febrile neutropenia
  - chills or sweating
  - sore throat, sores in the mouth, or a toothache
  - stomach pain
  - pain near the anus or sores around the anus
  - pain or burning when urinating, or urinating often
  - diarrhoea
  - a cough or shortness of breath
- **Diarrhoea** (even without other signs)
- **Hypersensitivity reactions (including infusion-related reactions)** which may cause the following signs and symptoms:
  - swollen lips, tongue, eyes, throat or face
  - swelling or a raised, itchy, red skin rash
  - outbreak of swollen, pale red bumps or plaques (wheals) on the skin that appear suddenly
  - fever
  - a sudden attack of severe shivering accompanied by a feeling of coldness
  - excessive sweating
  - wheezing, chest or throat tightness, shortness of breath, dizziness, feeling of fainting, breathlessness
  - chest pain, heart palpitations

- **Feeling sick (nausea), being sick (vomiting)**

### **Other possible side effects**

Other side effects are listed below. If any of these become severe or serious, tell your doctor immediately.

#### **Very common** (*may affect more than 1 in 10 people*)

- burning sensation during urination and frequent, and urgent need to urinate
- cough, sore throat, runny nose, headache, and sneezing
- anaemia
- low level of white blood cells (lymphocytes or leukocytes)
- loss of appetite
- low blood level of potassium or magnesium
- high blood level of glucose
- trouble sleeping
- feeling dizzy
- constipation, stomach pain
- hair loss, rash, general itching
- back pain, joint pain
- tiredness
- weight loss

#### **Common** (*may affect up to 1 in 10 people*)

- blocked nose
- pain in your face, wheezing
- flu like symptoms, herpes infection in the mouth
- low blood level of phosphate or calcium
- anxiety
- change in your sense of taste
- nose bleeding, shortness of breath when exercising, cough with phlegm
- inflamed and sore mouth, pain in upper stomach area, reflux, bloated stomach
- dry skin
- muscle pain in the chest, muscle spasms
- blood in urine
- chills
- increase in an enzyme called alkaline phosphatase and abnormal blood tests related to coagulation.

### **Reporting of side effects**

If you get any side effects, talk to your doctor or pharmacist. This includes any possible side effects not listed in this leaflet. You can also report side effects directly via **the national reporting system listed in Appendix V**. By reporting side effects, you can help provide more information on the safety of this medicine.

## **5. How to store Trodelvy**

Trodelvy will be stored by healthcare professionals at the hospital or clinic where you receive treatment. The storage details are as follows:

- Keep this medicine out of the sight and reach of children.
- Do not use this medicine after the expiry date which is stated on the outer packaging and vial after EXP. The expiry date refers to the last day of that month.
- Store in a refrigerator (2°C - 8°C). Do not freeze.

- Keep the vial in the outer carton in order to protect from light.
- After reconstitution and dilution, if not used immediately, the infusion bag containing diluted solution can be stored in a refrigerator (2°C - 8°C) for up to 24 hours protected from light.
- Do not use this medicine if you notice the reconstituted solution is cloudy or discoloured.

Trodrelvy is a cytotoxic medicine. Applicable special handling and disposal procedures must be followed.

## 6. Contents of the pack and other information

### What Trodelvy contains:

- The active substance is sacituzumab govitecan. One vial of powder contains 200 mg sacituzumab govitecan. After reconstitution, one mL of solution contains 10 mg of sacituzumab govitecan
- The other ingredients are 2-(N-morpholino)ethane sulfonic acid (MES), polysorbate 80 and trehalose dihydrate.

### What Trodelvy looks like and contents of the pack

The medicine is an off-white to yellowish powder for concentrate for solution for infusion supplied in a glass vial. Each pack contains 1 vial.

### Marketing Authorisation Holder

Gilead Sciences Ireland UC  
Carrigtohill  
County Cork, T45 DP77  
Ireland

### Manufacturer

Gilead Sciences Ireland UC  
IDA Business and Technology Park  
Carrigtohill  
County Cork, T45 DP77  
Ireland

For any information about this medicine, please contact the local representative of the Marketing Authorisation Holder:

### België/Belgique/Belgien

Gilead Sciences Belgium SRL-BV  
Tél/Tel: + 32 (0) 24 01 35 50

### Lietuva

Gilead Sciences Poland Sp. z o.o.  
Tel: + 48 22 262 8702

### България

Gilead Sciences Ireland UC  
Тел.: + 353 (0) 1 686 1888

### Luxembourg/Luxemburg

Gilead Sciences Belgium SRL-BV  
Tél/Tel: + 32 (0) 24 01 35 50

### Česká republika

Gilead Sciences s.r.o.  
Tel: + 420 910 871 986

### Magyarország

Gilead Sciences Ireland UC  
Tel.: + 353 (0) 1 686 1888

### Danmark

Gilead Sciences Sweden AB  
Tlf: + 46 (0) 8 5057 1849

### Malta

Gilead Sciences Ireland UC  
Tel: + 353 (0) 1 686 1888



**Deutschland**

Gilead Sciences GmbH  
Tel: + 49 (0) 89 899890-0

**Eesti**

Gilead Sciences Poland Sp. z o.o.  
Tel: + 48 22 262 8702

**Ελλάδα**

Gilead Sciences Ελλάς Μ.ΕΠΕ.  
Τηλ: + 30 210 8930 100

**España**

Gilead Sciences, S.L.  
Tel: + 34 91 378 98 30

**France**

Gilead Sciences  
Tél: + 33 (0) 1 46 09 41 00

**Hrvatska**

Gilead Sciences Ireland UC  
Tel: + 353 (0) 1 686 1888

**Ireland**

Gilead Sciences Ireland UC  
Tel: + 353 (0) 214 825 999

**Ísland**

Gilead Sciences Sweden AB  
Sími: + 46 (0) 8 5057 1849

**Italia**

Gilead Sciences S.r.l.  
Tel: + 39 02 439201

**Κύπρος**

Gilead Sciences Ελλάς Μ.ΕΠΕ.  
Τηλ: + 30 210 8930 100

**Latvija**

Gilead Sciences Poland Sp. z o.o.  
Tel: + 48 22 262 8702

**Nederland**

Gilead Sciences Netherlands B.V.  
Tel: + 31 (0) 20 718 36 98

**Norge**

Gilead Sciences Sweden AB  
Tlf: + 46 (0) 8 5057 1849

**Österreich**

Gilead Sciences GesmbH  
Tel: + 43 1 260 830

**Polska**

Gilead Sciences Poland Sp. z o.o.  
Tel.: + 48 22 262 8702

**Portugal**

Gilead Sciences, Lda.  
Tel: + 351 21 7928790

**România**

Gilead Sciences Ireland UC  
Tel: + 353 (0) 1 686 1888

**Slovenija**

Gilead Sciences Ireland UC  
Tel: + 353 (0) 1 686 1888

**Slovenská republika**

Gilead Sciences Slovakia s.r.o.  
Tel: + 421 232 121 210

**Suomi/Finland**

Gilead Sciences Sweden AB  
Puh/Tel: + 46 (0) 8 5057 1849

**Sverige**

Gilead Sciences Sweden AB  
Tel: + 46 (0) 8 5057 1849

**United Kingdom (Northern Ireland)**

Gilead Sciences Ireland UC  
Tel: + 44 (0) 8000 113 700

**This leaflet was last revised in**

Detailed information on this medicine is available on the European Medicines Agency web site:  
<http://www.ema.europa.eu>.

---

**The following information is intended for healthcare professionals only:**

Trodelvy is a cytotoxic medicine. Applicable special handling and disposal procedures have to be followed.

This medicinal product must not be mixed with other medicinal products except those mentioned below.

### Reconstitution

- Calculate the required dose (mg) of Trodelvy based on the patient's body weight at the beginning of each treatment cycle (or more frequently if the patient's body weight changed by more than 10% since the previous administration).
- Allow the required number of vials to warm to room temperature (20°C to 25°C).
- Using a sterile syringe, slowly inject 20 mL of sodium chloride 9 mg/mL (0.9%) solution for injection into each vial. The resulting concentration will be 10 mg/mL.
- Gently swirl vials and allow to dissolve for up to 15 minutes. Do not shake. The product should be inspected visually for particulate matter and discoloration prior to administration. The solution should be free of visible particulates, clear and yellow. Do not use the reconstituted solution if it is cloudy or discoloured.
- Use immediately to prepare a diluted solution for infusion.

### Dilution

- Calculate the required volume of the reconstituted solution needed to obtain the appropriate dose according to the patient's body weight.
- Determine the final volume of the infusion solution to deliver the appropriate dose at a sacituzumab govitecan concentration range of 1.1 mg/mL to 3.4 mg/mL.
- Withdraw and discard a volume of sodium chloride 9 mg/mL (0.9%) solution for injection from the final infusion bag that is equivalent to the required volume of the reconstituted solution.
- Withdraw the calculated amount of the reconstituted solution from the vial(s) using a syringe. Discard any unused portion remaining in the vial(s).
- To minimize foaming, slowly inject the required volume of reconstituted solution into a polyvinyl chloride, polypropylene or ethylene/propylene copolymer infusion bag. Do not shake the contents.
- If necessary, adjust the volume in the infusion bag as needed with sodium chloride 9 mg/mL (0.9%) solution for injection, to obtain a concentration of 1.1 mg/mL to 3.4 mg/mL (the total volume should not exceed 500 mL). Only sodium chloride 9 mg/mL (0.9%) solution for injection should be used since the stability of the reconstituted product has not been determined with other infusion-based solutions.
- For patients whose body weight exceeds 170 kg, divide the total dose of Trodelvy equally between two 500 mL infusion bags and infuse sequentially over 3 hours for the first infusion and over 1-2 hours for subsequent infusions.
- If not used immediately, the infusion bag containing diluted solution can be stored refrigerated 2°C to 8°C for up to 24 hours protected from light. Do not freeze. After refrigeration, administer the diluted solution at room temperature up to 25°C within 8 hours (including infusion time).

### Administration

- The infusion bag should be covered during administration to the subject until dosing is complete. It is not necessary to cover the infusion tubing or to use light-protective tubing during the infusion.
- Administer Trodelvy as an intravenous infusion. Protect the infusion bag from light.
- An infusion pump may be used.
- Do not mix Trodelvy, or administer as an infusion, with other medicinal products.
- Upon completion of the infusion, flush the intravenous line with 20 mL sodium chloride 9 mg/mL (0.9%) solution for injection.

### Disposal

Any unused medicinal product or waste material should be disposed of in accordance with local requirements.